

# KSPO - P6 EPPM v23.12.3 Update

This document describes how to install and set up P6 EPPM Client 23.12.3 to connect with EAI Prod environment using P6 Pro Cloud Connect.

## Database P6 Pro Cloud connection info

If you have P6 EPPM already installed and need to add a new connection, then you can go to [🔗 Configuring connection](#)

### KSPOTASH

	A	B
1	<b>kspotash</b>	
2	<b>Dirver Type</b>	P6 Pro Cloud Connect
3	<b>Database Alias</b>	kspotash
4	<b>Connection String</b>	kspotash@https://p6kspo.emerald-associates.com/p6procloudconnect/
5	<b>Read Timeout</b>	900
6	<b>Use SAML SSO</b>	unchecked
7	<b>Enable Local Cache</b>	checked
8	<b>Use ADO.NET Data Access</b>	checked
9	<b>Enable Project Checker</b>	unchecked

### KSPOTASH-ARCH

	A	B
1	<b>kspotash-arch</b>	
2	<b>Dirver Type</b>	P6 Pro Cloud Connect
3	<b>Database Alias</b>	kspotash-arch
4	<b>Connection String</b>	kspotash-arch@https://p6kspo.emerald-associates.com/p6procloudconnect/
5	<b>Read Timeout</b>	900
6	<b>Use SAML SSO</b>	unchecked
7	<b>Enable Local Cache</b>	checked
8	<b>Use ADO.NET Data Access</b>	checked
9	<b>Enable Project Checker</b>	unchecked

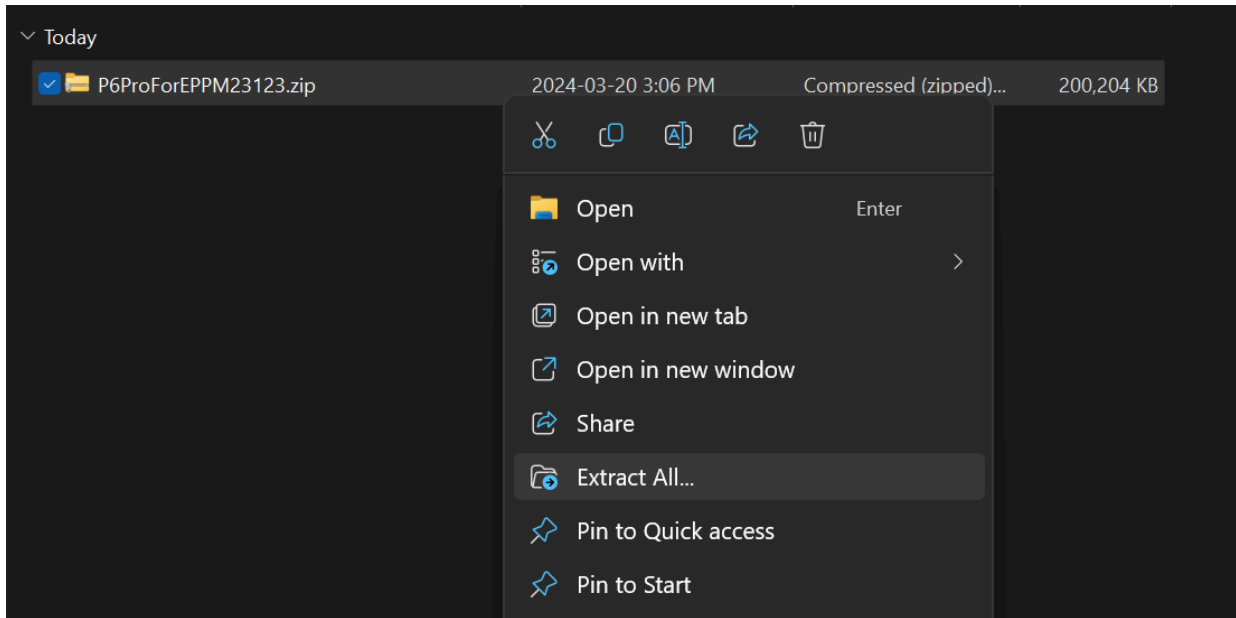
## Downloading P6 EPPM Client installer

The installer can be download from this URL: <https://p6kspo.emerald-associates.com/P6ProForEPPM23123.zip>.

## Installing

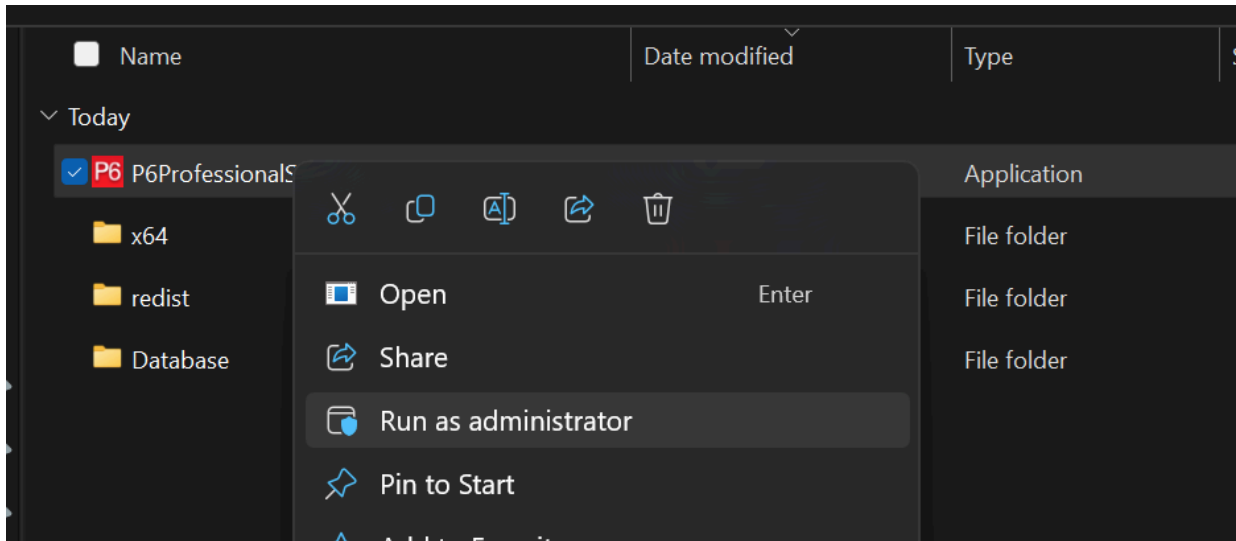
### EXTRACT

Go to the folder where are saved the file, then right-click on the file and select "Extract all".



## RUNNING INSTALLER

Go to into the folder "P6ProForEPPM" located on the extracted folder, then right-click over "**P6ProfessionalSetup.exe**" and select "Run as Administrator"

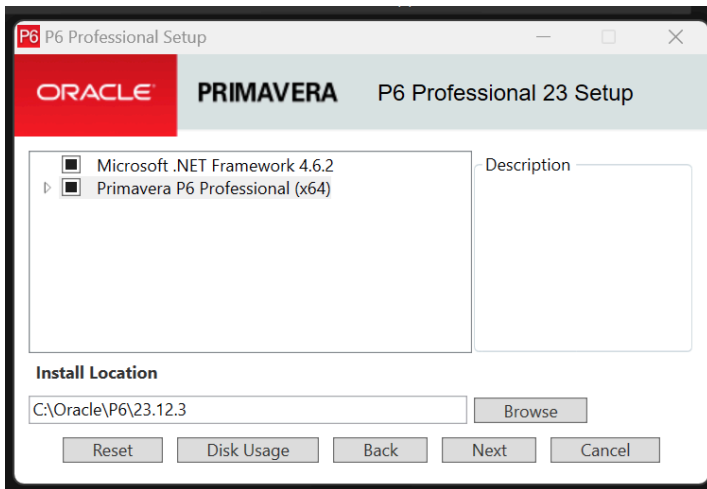


Select "Advanced" option



Uncheck "Replace existing version" box

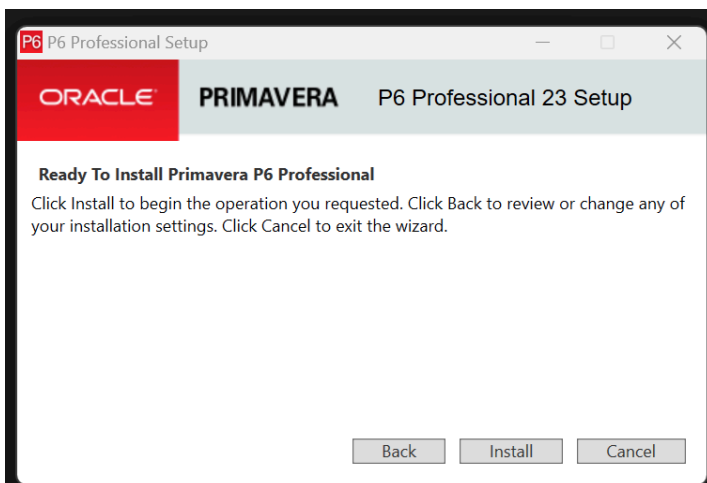
Click "OK"



Click over the label "Primavera P6 Professional (x64)" and change the "Install Location"

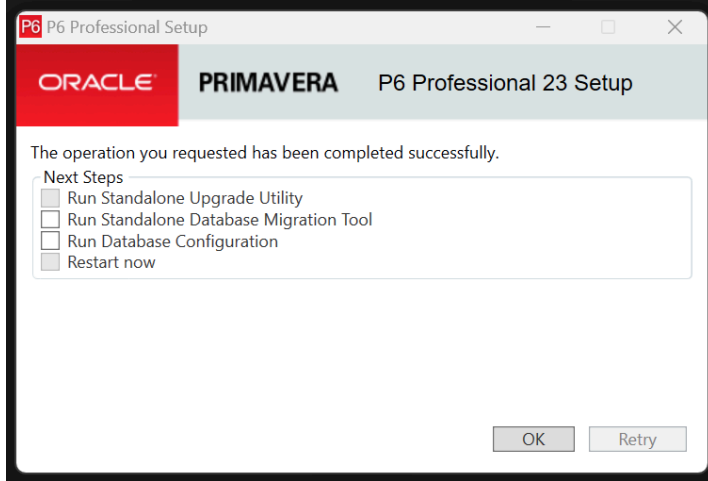
In this case, I am using "C:\Oracle\P6\23.12.3"

Click "Next"



Click "Install"

Follow

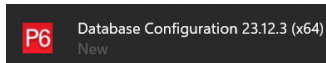


Uncheck all boxes.

Click OK

## CONFIGURING CONNECTION

Go to the Windows start menu and search for "Database Configuration 23.12.3 (x64)" and click.



Click "Add" button.

**P6 Database Configuration** ? X

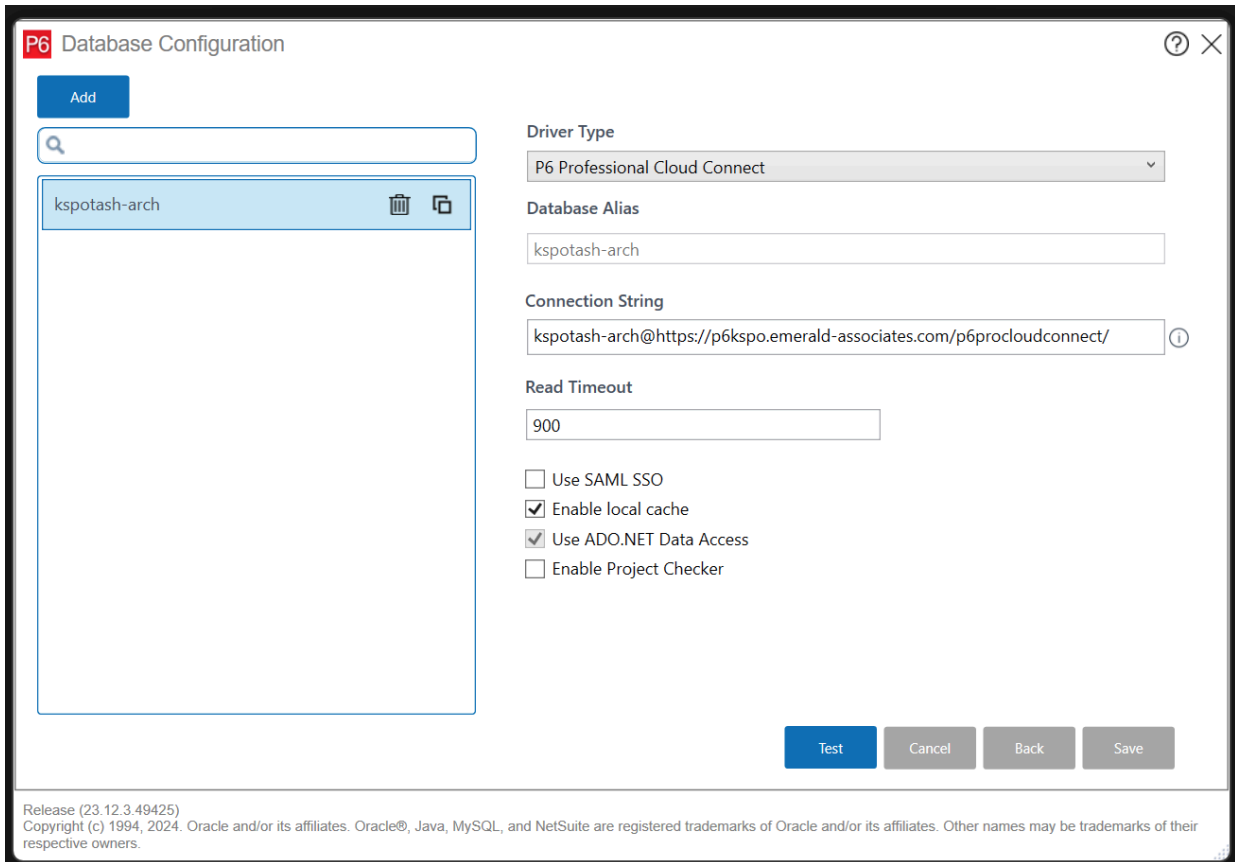
**Add**

**Driver Type**

**Database Alias**

Release (23.12.3.49425)  
Copyright (c) 1994, 2024. Oracle and/or its affiliates. Oracle®, Java, MySQL, and NetSuite are registered trademarks of Oracle and/or its affiliates. Other names may be trademarks of their respective owners.

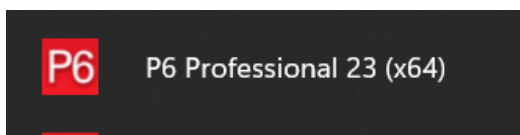
Provide the informations based on [Database P6 Pro Cloud connection info](#) , then click "Save"



Repeat the adding procedure to each environment/schema.

## CONNECTING

Go to the Windows start menu and search for "P6 Professional 23 (x64)" and click.



Click on "Advanced" and check if the correct database is selected and click "Connect",

P6 Professional 23

Login Name

Password

▼ Advanced

Database  
kspotash-arch

Language  
English (United States)

Reinitialize local cache

Connect Disconnect ⓘ

[Edit database configuration](#)

Release (23.12.3.49425)  
Copyright (c) 1984, 2024. Oracle and/or its affiliates. Oracle®, Java, MySQL, and NetSuite are registered trademarks of Oracle and/or its affiliates. Other names may be trademarks of their respective owners.

Click "connect"